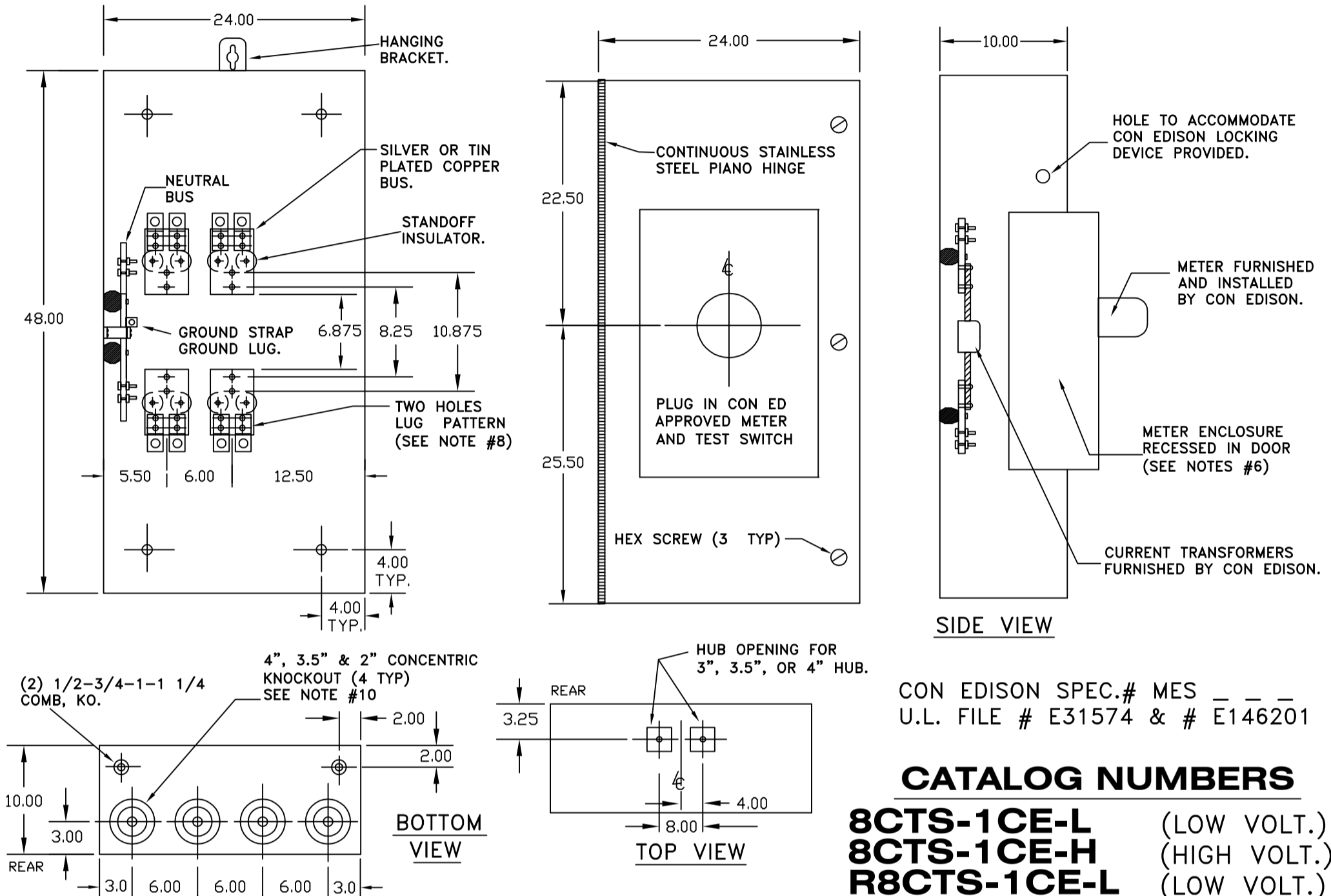


CON EDISON 800 AMPERE SINGLE PHASE TRANS "S"

CURRENT TRANSFORMER CABINET (NEMA 3R)
400AMP. 600A & 800AMP. 240V & 480V A.C. RATED



CON EDISON SPEC.# MES _ _ _
U.L. FILE # E31574 & # E146201

CATALOG NUMBERS

8CTS-1CE-L	(LOW VOLT.)
8CTS-1CE-H	(HIGH VOLT.)
R8CTS-1CE-L	(LOW VOLT.)
R8CTS-1CE-H	(HIGH VOLT.)
MS7P-1CE-L	(LOW VOLT.)
MS7P-1CE-H	(HIGH VOLT.)

- CABINET SHALL BE RATED NEMA 3R AND SHALL BE CONSTRUCTED FROM CODE GAUGE GALVANIZED OR GALVANNEALED STEEL.
- BUS BAR SHALL BE SILVER OR TIN PLATED AND SHALL BE SIZED PER THE NEC.
- BUS BAR SHALL BE MOUNTED IN THE CABINET BY MEANS OF STANDOFF INSULATORS OR INSULATED MOUNTING BRACKETS. INSULATING MATERIAL SHALL CONFORM TO THE APPLICABLE SECTIONS OF UL 746 AND UL 94. THE CABINET SHALL BE UL AND CON EDISON APPROVED.
- THE RIGHT HAND SIDE OF THE CABINET SHALL ALLOW FOR LINE AND LOAD CABLES TO ENTER AND EXIT THROUGH THE BOTTOM OF THE CABINET. THIS SPACE SHALL ALLOW FOR THE CABLES TO MEET THE MINIMUM BENDING RADIUS TO NEAREST PHASE OR NEUTRAL BUS AS PER THE NEC.
- THE SHORT CIRCUIT WITHSTAND CAPABILITY OF THE CABINET ASSEMBLY SHALL BE RATED AT 50,000 RMS SYMMETRICAL AMPERES.
- METERING COMPARTMENT TO BE TOTALLY ISOLATED FROM C.T. COMPARTMENT FOR "REMOTE" USE. USE CAT. NO. R8CTS-1CE-L WITH MS7P-1CE-L OR R8CTS-1CE-H WITH MS7P-1CE-H. ALL TO CONFORM TO MES # _ _ _.
- MANUFACTURER SHALL FURNISH AND INSTALL 1/2-13 STUDS WITH SPLIT LOCK WASHERS AND HEX NUTS FOR C.T. MOUNTING.
- USE ONLY MANUFACTURER'S APPROVED LUGS PROVIDED. (2) LUGS PER TERMINAL, EACH RATED FOR (1) 600 MCM-#4 CABLE.
- ONLY FACTORY PREFABRICATED KNOCKOUTS ON THE ENCLOSURE SHALL BE USED.**
- PROVIDE PREWIRED TRANS "S" UNIT WITH #12 AWG STRANDED (19/25) THHN COPPER COLOR CODED WIRE FROM THE TEST SWITCH TO THE SOCKET ASSEMBLY AND FROM THE TEST SWITCH METERING COMPARTMENT INTO THE C.T. COMPARTMENT. LEAVE 7 FT. OF WIRE FOR FUTURE CONNECTION TO THE CURRENT TRANSFORMERS. USE EITHER HOOK OR RING TYPE TINNED COPPER LUGS FOR TERMINATIONS. ALL WIRING IN ACCORDANCE WITH CON EDISON MES # _ _ _ , (EXCEPT AS NOTED IN MES # _ _ _ FOR FORM 4S METER SOCKET).
- SECURITY HARDWARE TO BE PROVIDED FOR CT CABINET DOOR AND METER ENCLOSURE COVER (TO BE INSTALLED BY CONTRACTOR).
- 265/460 VOLT SERVICE REQUIRES A DISCONNECT SWITCH BEFORE THE CT CABINET.

SUPERIOR ELECTRICAL ENCLOSURE INC.
DBA: Delta Standard Products

16 SPENCER ST. BROOKLYN, N.Y. 11205
PHONE: 718-797-9090 FAX: 718-797-9099
e-mail: Info@SuperiorEE.com

TITLE: CON EDISON
800 AMP SINGLE PHASE
TRANS "S"

DATE: 4/30/12 DWG. NO.: FL-200A1120-SEE